



MSFD and BHD towards a coordinated implementation

Anna Karasszon
European Commission
DG Environment
Marine Environment and Water
Industry Unit

MARMONI Final Conference:
**“Innovative indicators, methods, monitoring & assessment of
marine biodiversity in the Baltic Sea”**
January 27-28, 2015

Structure of the presentation

- 1. General background and state of play*
- 2. Art. 8, 9, 10 reporting – lessons learnt*
- 3. Way forward*

Background



How to determine GES?

- *MSFD requires MS cooperation & harmonisation with existing legislation, BUT:*
- *1st phase of reporting → low coherence of GES definitions across MS, regions, and with other existing legislation*



Conclusions of 1st reporting phase

D1 - biodiversity

GES definition

- *geographical scope: all marine waters, with 2 exceptions*
- *descriptor level / descriptor + criterion level / descriptor + criterion + indicator level*
- *mostly qualitative and vague*

Initial assessment

<i>Highly mobile species group</i>	
<i>Level of assessment</i>	<ul style="list-style-type: none">-species group-functional group-1 MS at individual species level-some MS don't report on all groups
<i>Links to BHD</i>	<ul style="list-style-type: none">-arrangements to defer reporting to 2013-certain MS reported directly under MSFD
<i>Links to RSCs</i>	<ul style="list-style-type: none">-varying

Initial assessment

<i>Seabed and water column habitats</i>	
<i>Level of assessment</i>	<ul style="list-style-type: none">- predominant habitat type- alternate broad habitat classes- 1 MS at specific habitat level or a mixture of these levels- coverage of habitate types varies
<i>Links to BHD</i>	<ul style="list-style-type: none">-arrangements to defer reporting to 2013-certain MS reported directly under MSFD
<i>Links to RSCs</i>	<ul style="list-style-type: none">-varying

Initial assessment

Ecosystems

- *8 MS reported at the ecosystem level*
- *limited & qualitative (lack of assessment techniques)*

Environmental targets

- *all but 2 MS defined environmental targets & associated indicators, most not distinguishing bw sub-regions*
- *some identified targets for D1, others for D1 and 4, D1 and 6 or D1 4 and 6 together*
- *focus on state-based targets, but majority of them could be considered as expressions of GES*
- *low & moderate coherence across regions, low coherence across sub-regions*

Descriptor 1

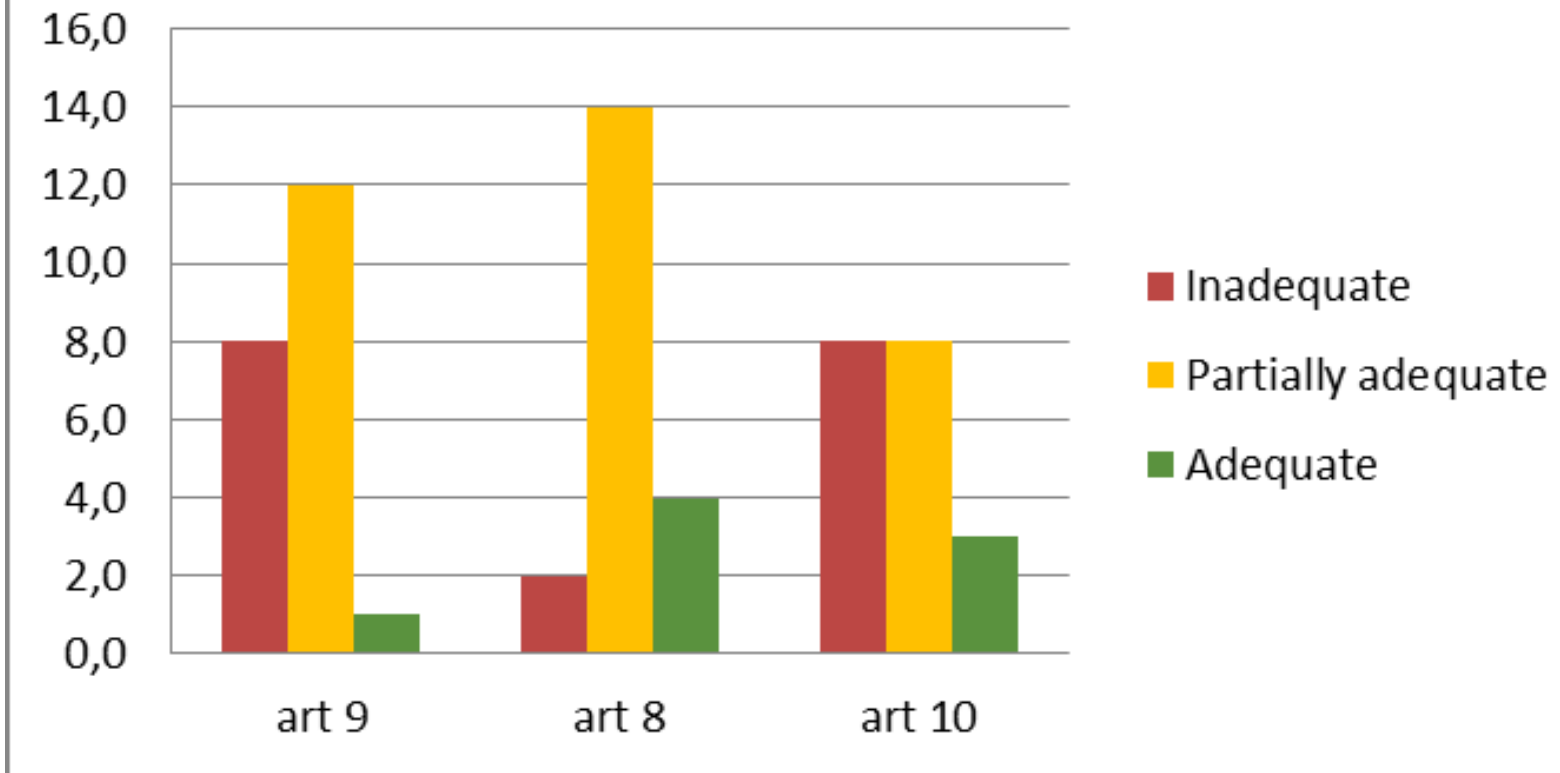


Figure 2, Commission Staff Working Document SWD(2014)49

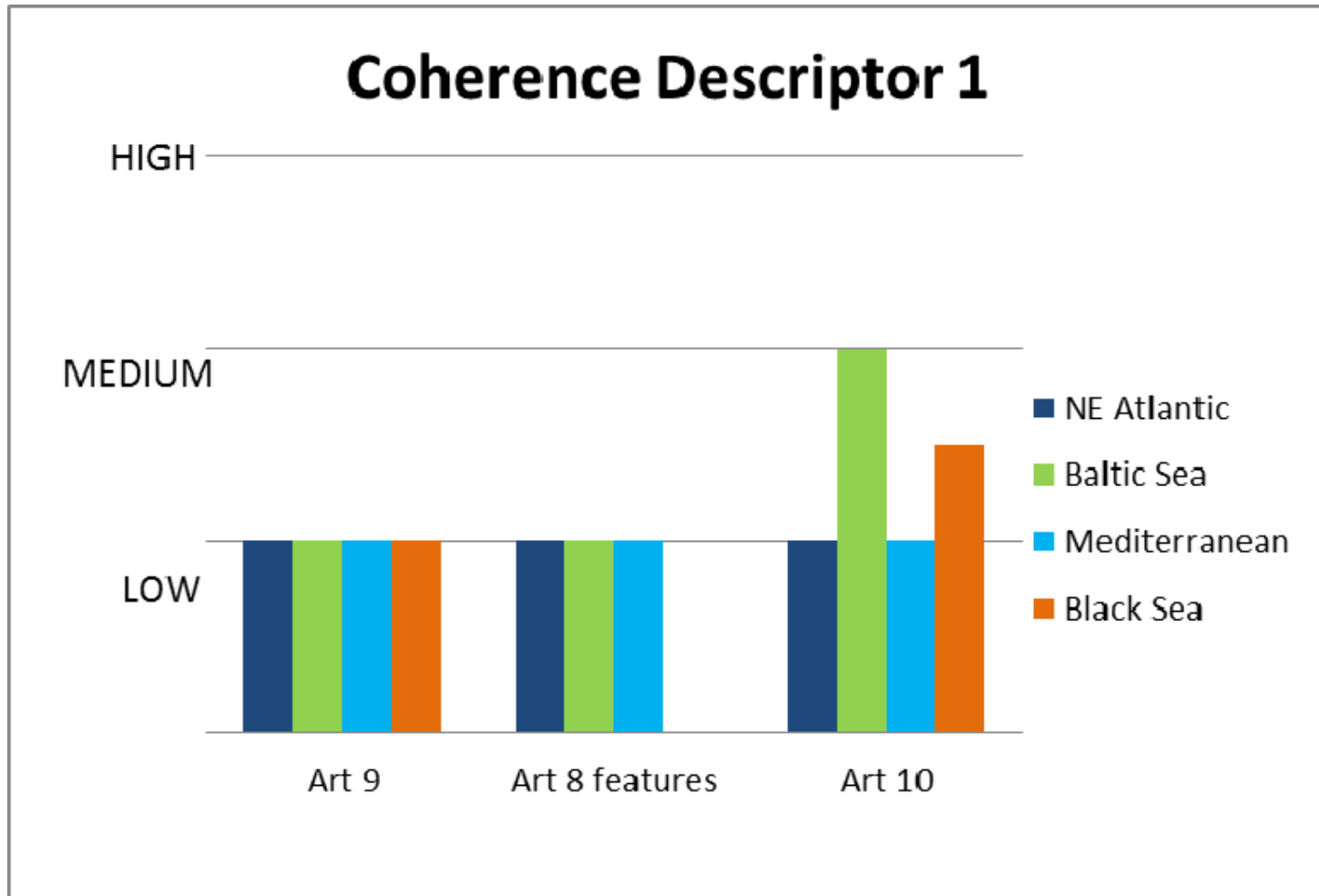


Figure 3, Commission Staff Working Document SWD(2014)49

Scales for assessment

- *8 MS used 1 assessment area (entire marine waters), 11 used more than 1 assessment area and for 3 MS information was not available*
- *size of assessment areas varied largely*
- *no scaling up*

Reference levels for GES and targets

- *in art. 8, 9 10 reports the approach to using ref. points & targets varied, both across descriptors and MS*
- *in some cases current state in 2012 was used as reference point*
- *many cases reference points for determining GES and tartgets not documented*



Comparison of the reports of 2 neighbouring countries

Case study

	Country A	Country B
Descriptor used	D1, 3, 4, 6 together	D1, 4, 6 together
Definition of GES & assessment criteria	MSFD Annex I and GES Decision wording only Criteria used to set targets, not to define GES	Adds to MSFD Annex I GES described at criterion level, but not at indicator level
Reference points	Not fixed	Makes reference to RSC's 2010 status report, but not used consistently
Target	Not quantified (certain sub-targets are →MSY, SSB for fisheries)	Quantified
Reference to other legislation	In initial assessment and when setting targets (= relevant BHD targets)	In the definition of GES (BHD, WFD) & also in case of indicators (BD target as indicator for scavenging seabirds species)
Reference to regional cooperation	Indicators linked to work done in RSC, ICES and neighbouring MS when developing them	Use of RSC indicators



Way forward





Workshop on the coordinated implementation of nature, biodiversity, marine and water policies, December 2014

- Large consensus that common agenda is the only way forward
- Develop a common understanding
- Clear message is needed that there are no conflicts and solutions can be found through better cooperation and dialogue
- Products presented under LU Presidency (25-27 November 2015)

GES Decision Review

1. **Simpler**
2. **Clearer**
3. **Introducing minimum standards (to be enhanced by regions and MS, if necessary)**
4. **Self-explanatory**
5. **Coherent with other EU legislation**
6. **Coherent with regional assessment methods (where EU methods do not exist)**
7. **Include a clear and minimum list of elements and/or parameters per descriptor**

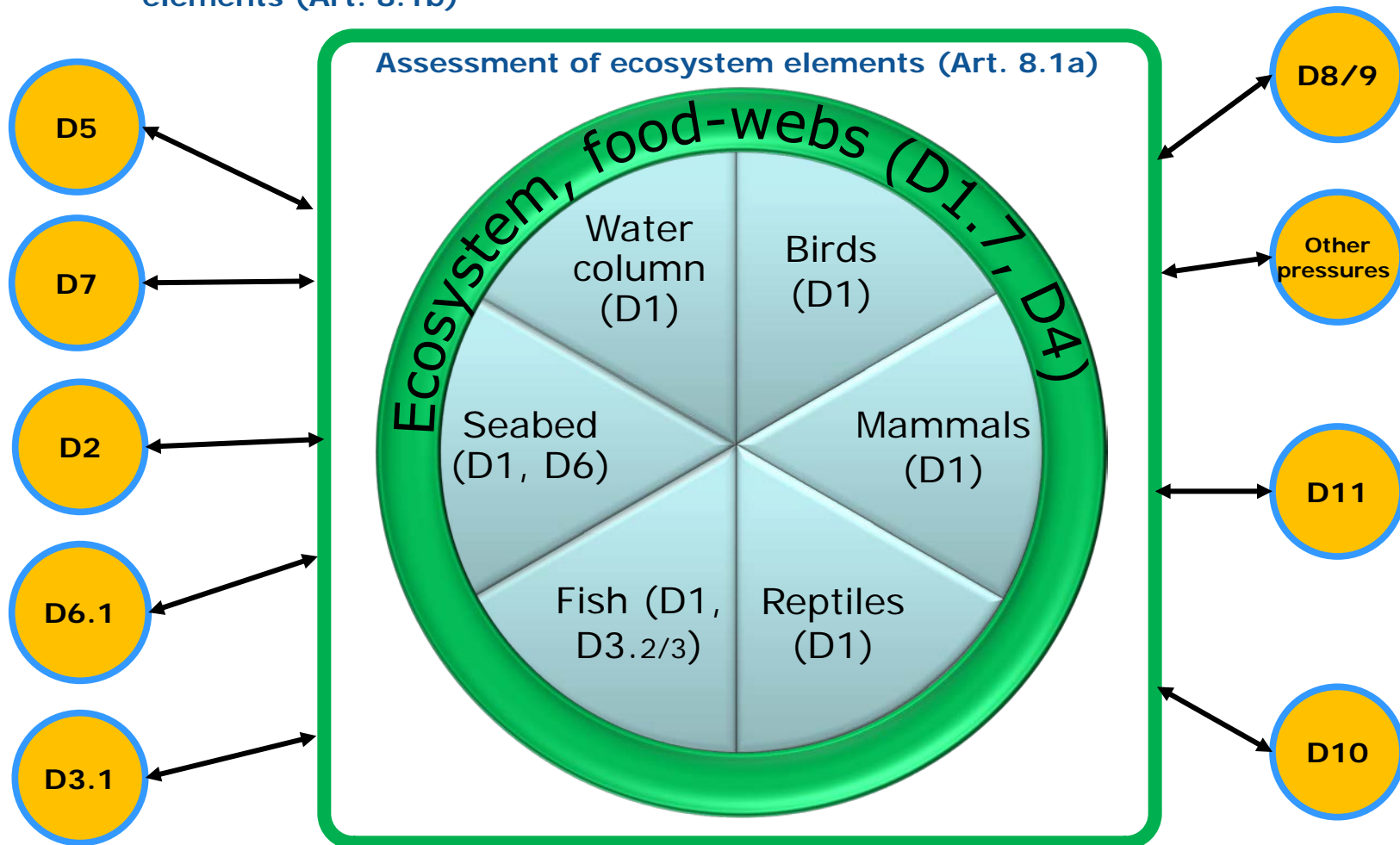
GES Decision review II

- *how to achieve these objectives? → by the integration of descriptors and alignment with EU & RSC standards*



Commission

Assessment of specific pressures and their impacts on ecosystem elements (Art. 8.1b)



D1: Aligning MSFD & BHD

Aspects to consider:

- *elements for assessment*
- *assessment criteria*
- *reference points*
- *aggregation scales*
- *time period*

Elements for assessment

- a. EU - Habitats and Birds Directive lists*
- b. International Convention lists*
 - i. RSCs – OSPAR, HELCOM, Barcelona, Bucharest Conventions
 - ii. Others – e.g. ASCOBANS, ACCOBAMS, which others?
- c. Commercial fish (CFP) – ICES selection methodology*
- d. Functional species groups & predominant habitat types*
- e. Regional - RSC 'common indicator' species and habitats*
 - representative of biodiversity and pressures



Criteria – aligning MSFD and HBD

	MSFD (D1, 3, 4, 6)	BHD	IUCN Red List	-> Use
Species	Distribution (1.1)	Range	Range (EOO, AOO)	Distribution (2)
	Population size (1.2); reproductive capacity (3.2)	Population	Population size Small population	Population size (1) – no./biomass
	Population condition (1.3); age & size distribution (3.3)		Mature individuals incl. above	Population condition (1)
		Habitat for species	Habitat quality incl. in Range	Habitat for species (2)
		Future prospects	Included above	-
Habitats	Distribution (1.4)	Range	Quantity (extent of occurrence; area of occupancy)	Distribution (2)
	Extent (1.5)	Area covered		Extent (1)
	Condition (1.6, 6.2)	Structures & functions	Quality (biotic, abiotic)	Condition (1)
		Future prospects	Included above	-
Ecosystems	Structure (1.7); productivity (4.1); prop. of top predators (4.2); Abund./ distribution (4.3)			Aggregation rules to Functional group & predom. habitat) D4 structure & function??

Reference points

GES = FCS ?

- **Baseline year**
- **Level of ambition**

Assessment scale

- *(sub)regional approach (MSFD) vs. MS level assessment (HBD)*
- *GES review: nested system of areas for assessment matching species with appropriate assessment scale*

Time period

- *both MSFD and HBD foresee 6-year reporting cycles*
- *next reporting in October 2018 (MSFD) and July 2019 (HBD) → how to close the gap?*

Conclusion

If these aspects harmonised: 1 assessment for MSFD & BHD → less burden for MS



Thank you for your attention!